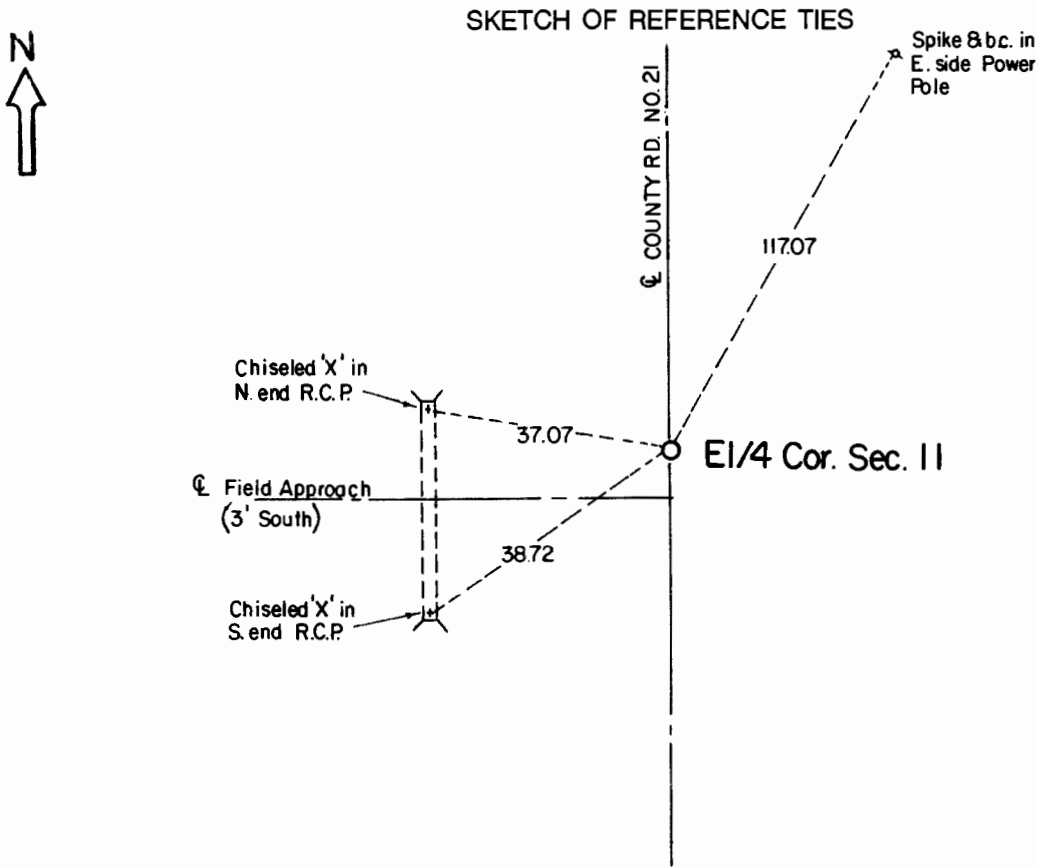


CERTIFICATE OF LOCATION OF GOVERNMENT CORNER

East Quarter Corner of Section **11** , Township **108** , Range **41** 5th P.M.
STATE OF MINNESOTA, County of Murray.

Statement: Aug. 2, 1989 - Found a Pk. nail above a re-rod above a field stone.
Placed a Mn/DOT Cast Iron Monument just below the pavement surface.



Statement of evidence relative to this corner location is on the back of page.

I hereby certify that this document and the data contained herein was prepared by me or under my direct supervision and that I am a duly Registered Land Surveyor under the laws of the State of Minnesota.

Duane A. Bonnema
Duane A. Bonnema

Nov 6, 1989
Date

Minnesota Registration No. 14895

OFFICE OF THE COUNTY RECORDER
COUNTY OF MURRAY **NOV 15 1989**

I hereby certify that this document was filed in the County Recorder's office at ___ M. on the ___ day of ___ A.D., 19__

County Recorder

James V. Johnson

By _____, Deputy

DOCUMENT NO. _____

East Quarter Cor. Sec. 11 T108N-R41W

Statement:

- September 1861 Original Government Land Office Surveyor L. G. M. Fletcher records in his field notes, "set post in mound with trench pits, charred stake, per instructions."*
- Date Unknown The Murray County Surveyor records in the County Surveyor's Records Book "Stone" and he also established witness ties to the Corner while doing survey work in Section 11.*
- April 17, 1979 The Murray County Highway Engineer's Office records that they found a Concrete Monument and place a P.K. nail above Monument. They also established witness ties to the Corner.*
- Aug 2, 1989 Duane A. Bonnema, LS 14895, found a 3/4 in. x 8 in. iron re-rod 1.3 ft. below the road surface using two of the 1979 County witness ties. Also found a 24 in. x 16 in. x 9 in. stone 3 ft. below the road surface. Natural ground was located 2 ft. below the road surface. A Minnesota Department of Transportation Cast Iron Monument was placed at the road surface.*